

Renovated Condo in Beaverdam Run

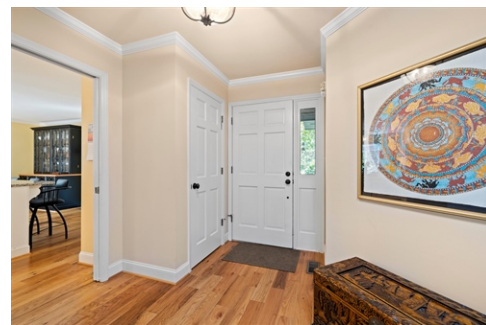


\$ 954,000



32 Ridgeview Drive, Asheville, NC 28804

- » Beds: 3 | Baths: 3 Full
- » MLS #: 3912493
- » Single Family | 2,974 ft²
- » Beautiful Mountain Views
- » Walking Trails Overlooking Ponds, Streams and Lush Landscaping
- » More Info: 32RidgeviewDrive.com



LeNoir Medlock
(828) 258-2953 (office)
(828) 691-9981 (cell)
lenoirm@preferredprop.com
<http://www.PreferredProp.com>


Preferred Properties
Preferred Properties Of Asheville
39 Woodfin Street
Asheville, NC 28801
(828) 258-2953

Renovated 3 bedroom, 3 bathroom Beaverdam Run condo with beautiful and private mountain views. Beaverdam Run is located in North Asheville on 115 spectacular acres surrounded by the WNC mountains and boasts walking trails overlooking ponds, streams and lush landscaping. A clubhouse with indoor, heated pool & sauna, workout room and an active neighborhood of people that gives opportunity to participate in everything from pickleball to mah-jongg. This cul-de-sac condo is bright and airy because the owner has updated the unit from the baths to the kitchen. The primary bedroom features an elegant wood ceiling and built in bookcases. The lower guest room creates a feeling of being in a New England cottage while the main guest room has a murphy bed and can be used as an office or bedroom. This home is in "move-in" condition.

